



# WSU CIVIL CAPABILITY STATEMENT



# ABOUT US



**SERVICING AUSTRALIA**



**ACCESS TO SKILLED INDIGENOUS LABOUR**



**ACCESS TO MODERN CIVIL PLANT**

## OFFICES

### QLD

Brisbane  
Townsville  
Rockhampton

### VIC

Melbourne

### SA

Adelaide

### NT

Darwin



## THE JOINT VENTURE

Waanyi Shamrock United (WSU Civil) is a registered Joint Venture civil construction company consisting of Shamrock Civil Engineering and Northern Project Contracting (the commercial arm of Waanyi Aboriginal Corporation).

Shamrock Civil Engineering and Waanyi Aboriginal Corporation commenced working together in 2016 and announced its registered Joint Venture partnership as WSU Civil in May 2017. WSU Civil progressed its business recognition status by achieving Supply Nation Certification in June 2019 as well as gaining ISO9001, ISO14001 & ISO45001 in early 2022.

This joint venture amalgamates Shamrock Civil Engineering's 29 years of civil contracting experience, its various quality & safety certifications, and its extensive plant fleet with Waanyi Aboriginal Corporation's cultural connection to the land. While at the same time providing training for Indigenous young people in a variety of roles in the construction industry.

## CORE COMPETENCIES AND CAPABILITIES

- Planning, programming and budgeting pre-construction
- Providing a quality product on time & within budget while maximising indigenous participation
- Completing projects to the satisfaction of the client and in doing so create repeat business
- Supporting and building local Indigenous capacity while working within regional areas
- Building and sustaining a "no harm" working environment
- Providing cultural heritage and inspection
- Implement Indigenous labour hire
- Provide and coordinate Indigenous training in all facets of construction
- Integrating local communities into the construction industry



# ABOUT US



## SERVICES

WSU Civil is focused on delivering services to the gas and mining, transport infrastructure, commercial, Defence and government development sectors. Our team has access to skilled staff across operations in Brisbane, Townsville, Adelaide, Doomadgee, Cairns, Whyalla, Woomera, Timber Creek and Rockhampton. Our business is driven by a collaborative approach to project delivery and the combined diversity of our skills and capabilities.

WSU has been providing project deliverables to the desired quality and environmental standards in a safe and sustainable manner since 2017. We are committed to our clients and place value and emphasis on creating and maintaining long term relationships.

Through our comprehensive service offering, our priorities are maintaining the safety of our people, delivering better value for our clients, enhancing indigenous business and employment opportunities and supporting our local communities.

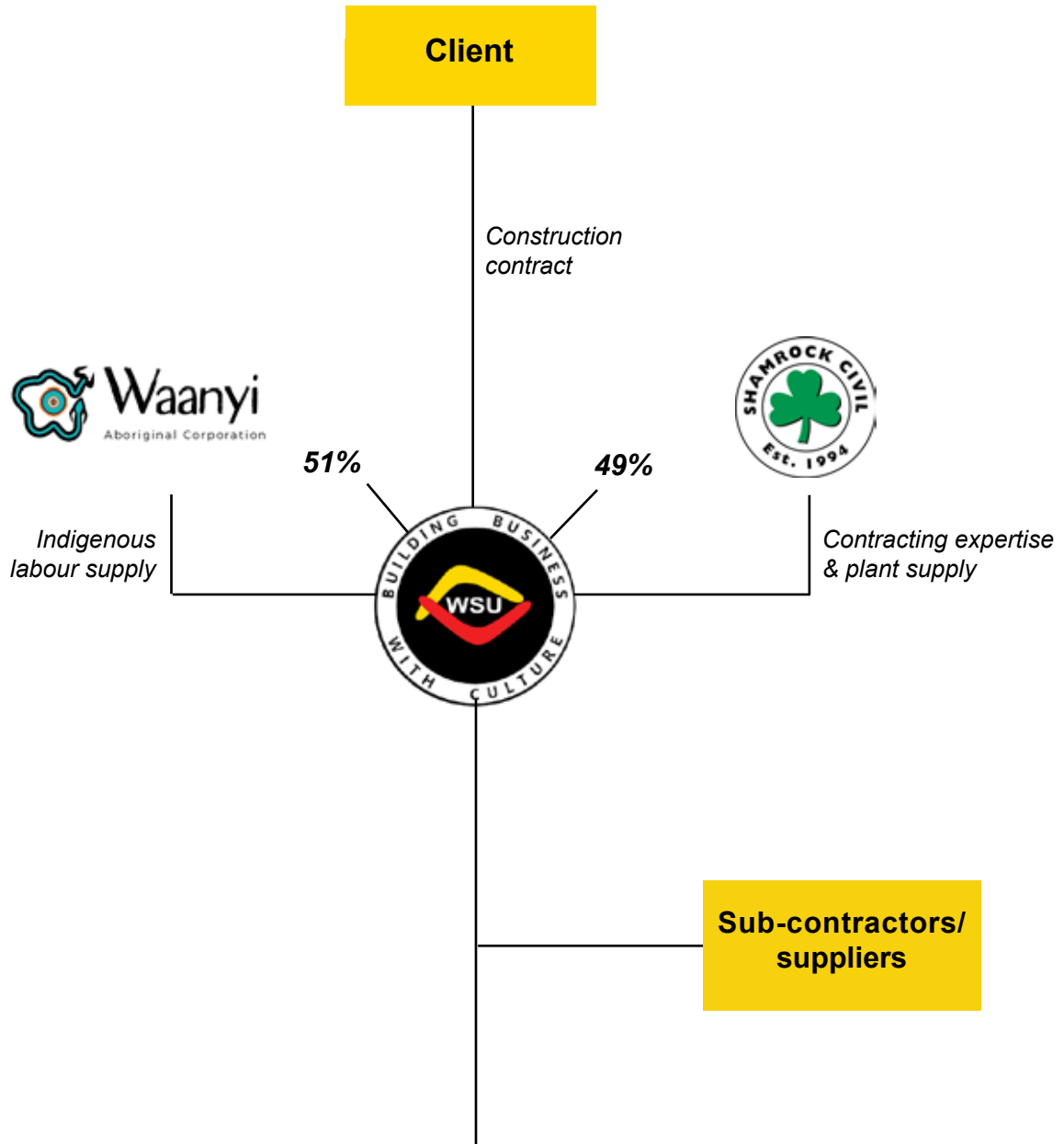
Our key civil construction services include:

- Bulk earthworks
- Roads and bridges
- Concreting
- Dams and ponds
- Cultural heritage site inspection
- Stormwater drainage and fittings
- Water pipelines and infrastructure
- Sewerage pipelines and infrastructure
- Land and soil remediation
- Landscaping, seed gathering, native plant selections
- In ground services excavation, trenching and conduiting
- Hardstand and lay down areas
- Building and construction pads
- Landfill cells and facilities

Smoking Ceremony at Cultana, South Australia



# OPERATING STRUCTURE



Federal Safety Accreditation  
 - OHS ISO 45001  
 - Quality ISO 9001  
 - Environment ISO 14001



# PROVEN EXPERIENCE



WSU is an experienced contractor with a successful history of completing projects on various Australian sites over the past 6 years operating as a subcontractor to Tier 1 and 2 Contractors. This provides the benefit of a workforce that has a strong knowledge of working within operational Australian Defence Facilities and the health and safety, cultural heritage, environmental, quality and security expectations of Department of Defence.

WSU pride ourselves as a specialist civil contracting company, providing construct options for our clients including but not limited to service installations and relocations, stormwater, wastewater and pipeworks, as well as roads, concrete works, hardstands and landscaping.

When working within an existing operational environment we utilise our collaborative contracting model, and no surprises approach, to communicate consistently and effectively with all stakeholders to ensure we are minimising the impacts of the construction on the ongoing operations of the sites we are working within. By maintaining open, honest and cooperative communication we are able to carefully identify risks and opportunities and implement mitigation measures to effectively manage the requirements of individual projects.

## KEY PROJECTS:

- **Defence Logistics Transformation Program (DLTP) - Joint Logistics Unit Lavarack Barracks, Townsville**
  - Stormwater pipes installations
- **LAND 121 Stage 2 Unit Sustainment Facilities, Townsville**
  - Concrete culvert slabs, stormwater pipe installation
- **Land 155 Works Package 2, Townsville**
  - Site preparation, clearing and levelling
  - Construction of concrete slabs and footpaths
  - Installation of road pavements
  - Installation of stormwater pipes, water and sewerage pipes
  - Rock pitching
  - Construction of dish drains
  - Construction of hard stand areas
- **RAAF Base Scherger Perimeter Fencing and Roads Works, Weipa**
  - Repairs to existing and installation of new sections of perimeter fencing
  - Installation of RCPs in waterways
  - Construction of perimeter road
  - Clearing of vegetation around Base perimeter fence line
- **LAND 4502 Pad West PFAS Stockpile, Townsville**
  - Earthworks
  - Upgrade gravel road
  - Build stockpile pad
  - Cart, place and compact contaminated material



# Why WORK WITH US



WSU is committed to delivering excellence in civil construction by focusing on the key business practices such as health, safety, environmental and quality. WSU embrace the structure and protocols of third party certified management systems to meet the challenges associated with the increased complexity and value of projects we undertake.



## SAFETY

The safety of our people is our number one value. We ensure our initiatives are linked to comply with the Work Health and Safety Act (2011) and stand by the mantra that there is no task so important that it compromises the safety of an individual.

Our strong health and safety culture can be attributed to the focus on a Zero Harm culture and providing a supportive working environment for our employees, subcontractors and partners

WSU adhere to a Workplace, Health & Safety system that complies with the requirements of ISO 45001, is third party certified and has also achieved Federal Safety Accreditation.



## HEALTH & WELLBEING

We are taking steps to continually improve the mental and physical health of our workforce, which has the potential to deliver significant productivity benefits to our employees and the industry.

We have implemented a dynamic health program, creating safer work attitudes and encouraging behavioural change through recognising the links between health and safety at work and at home.

Through our partnership with Mates in Construction, we are able to offer a range of resources and training for our team.



## ENVIRONMENT

WSU Civil is committed to understanding, meeting and continuously evolving our approach to environmental management. Our Environmental Management focus is to reduce the impact our operations have on all aspects of the environment, including native flora and fauna, air and water quality, soil conditions and cultural heritage.

We are able to implement practices that significantly reduce our impact, whilst continuously developing these practices to improve our environmental performance.

WSU operate to an Environmental system which is third party certified and complies with the requirements of ISO 14001.



## QUALITY

We are constantly striving to improve our products and services for the benefit of our clients and the betterment of our business. Our focus on Quality Management includes a detailed analysis of client demands prior to the commencement of operation and implementation of stringent quality control procedures during construction.

The Quality Management System that WSU implements complies with the requirements of ISO 9001 and is third party certified.

# GIVING BACK



## COMMUNITY ENGAGEMENT

WSU is committed to leaving a lasting legacy in the communities in which it operates. The company is keen on assisting local communities through assisting business capability development, employment and training opportunities.

This is inclusive of providing assistance to other indigenous based businesses that WSU have the opportunity to work with in the delivery of projects.



## INDIGENOUS PARTICIPATION

As a Supply Nation Certified indigenous owned business WSU is committed to improving the social and economic welfare of Indigenous people by providing opportunities for employment and promoting career development for Indigenous people and providing a culturally sensitive workplace.

WSU is structured to maximise indigenous participation through enabling Indigenous participation in major projects which in turn will build on its civil contracting capability by offering labour, training, and plant hire opportunities for our Indigenous workforce and support its inclusion of the local community we are working in at the time.

Schegerer team, Weipa



# GIVING BACK



WSU celebrates NAIDOC week.



## LOCAL PARTICIPATION

WSU Civil is committed to the principles of sustainable development of Small and Medium Enterprise Indigenous businesses within the local geographical footprints of our projects and operations to enhance the socioeconomic sustainability of the local communities.

WSU is committed to providing early communication to the local business community to allow interested parties to maximise their potential to secure supply delivery opportunities in their local region.

We approach each project individually, actively identifying opportunities for local community engagement and participation that will provide beneficial outcomes for the project team, client and local community.



We recognise the importance of providing real opportunities to Indigenous communities, to develop economic and social capability, which ultimately improves their standards of living and associated health and well-being.

This has been a long standing approach to each of our business operations and the partnership now strengthens that position. We provide services to the mining and civil construction industry, while offering local indigenous communities the opportunity to take part in wealth-generating activities on traditional lands.

WSU will continue to focus on increasing our commitment to Indigenous engagement across the Joint Venture company, to create a diverse workforce. We have extensive experience working in regional and remote areas and within Aboriginal and Torres Strait Islander communities. Our policies, plans, initiatives and training programs support our commitment to provide equal opportunities.



# RELEVANT EXPERIENCE



## BRADSHAW FIELD TRAINING AREA 3 YEAR ROAD WORKS NT

### Location

Timber Creek, NT

### Client

Department of Defence  
(Aurecon)

### Commencement Date

August 2021

### Completion Date

November 2022

### Contract Value

\$17.2M

### Overview

Waanyi Shamrock United (WSU Civil) was engaged to complete various maintenance and improvement road works. The works consisted of rehabilitation of existing road pavement, construction of heavy duty pavement, installation of new concrete floodways and sealing pavement. WSU Civil's works also included all erosion and sediment controls around water ways, and installation of concrete canvas with armour rock around all the floodways.

### Scope of Works

Roadway, drainage and signage works are to be conducted along the existing primary road of:

- Ikymbon Road 30.65 km
- Angalarri River Road 33.8 km
- Homestead Access Road 2.65 km
- Ikymbon/Angalarri Road reinforced concrete intersection
- Sixteen reinforced concrete floodways complete with sealed approaches and concrete canvas
- 17 km of two coat bitumen seal on Ikymbon Road

General maintenance of the unsealed roads to ensure Bradshaw Field Training Area is maintained to allow practical use of the roads for all training activities, the ADF and visiting foreign troops.

Deliver a road maintenance and management plan.

Production of pavement material, using existing borrow pits, that included clearing limited to regrowth vegetation clearing, extracting water from an existing bore, and quarrying materials needed to complete the main scope of work.

### Achievements

- WSU Civil utilised existing borrow pit locations that the existing road pavement was constructed, thus producing conforming gravel at efficient productivities.
- WSU Civil managed to uphold a high level of local and indigenous participation on the project and has exceeded 20% indigenous participation.
- No Lost Time Incidents were recorded on site.



# RELEVANT EXPERIENCE



## CULTANA TRAINING AREA (CUTA) ROAD REMEDIATION

### Location

Whyalla SA

### Client

Department of Defence (Aurecon)

### Commencement Date

August 2022

### Completion Date

June 2023

### Contract Value

\$8.5M

### Overview

The primary scope of work for the Cultana Road Remediation project is a 5.5km road through hilly terrain to connect Sentry Point 1 with Sentry Point 2, a vital access route from the entry to the training area. The site is situated in the Australian Army Cultana Training Area adjacent to Lincoln Highway and Port Bonython Road, Whyalla SA. The project included heavy duty culverts and a heavy-duty floodway, suitably trafficable by a fleet of Defence vehicles. Due to the hilly terrain, arid climate and variety of natural materials, the use of large swales with consistent rock checks have been installed throughout the length of the road.

Onsite quarry works were utilised to produce the subgrade material that was used throughout the bulk earthworks phase of the project.

### Scope of Works

- Bulk import of 52,000m<sup>3</sup> to build up road levels
- Installation of 6 heavy duty precast culverts including headwalls and scour protection
- 5.5km of unseal road installed and 70m of concrete floodway
- SCE are quarrying general fill on-site and placing to design subgrade levels as per contract specification
- Import & place pavement materials 170mm subbase & 200mm wearing course as per contract specifications
- Construct multiple swale drains, cut off drains and over 100 rock check dams to prevent scouring
- Installation of road furniture and sustainable fencing



### Achievements

- The project was delivered achieving 'zero harm' in all aspects relating to health, safety and environment. This project was completed on an active training area and through constant communication with the RCO around deconfliction, the project was successfully delivered without disruption to the training personnel.
- WSU Civil were commended on installing 200m of farm fencing, sourcing alternate posts made from sustainable plastic.



# RELEVANT EXPERIENCE



## WOOMERA KOOLYMILKA PIPELINE REMEDIATION WORKS, SA

### Location

Woomera, SA

### Client

Augility (DoD)

### Commencement Date

October 2022

### Completion Date

July 2023

### Contract Value

\$7.9M

### Overview

The Woomera Koolymilka Pipeline supplies water from Woomera township to the Range E headquarters. The Pipeline remediation project was undertaken while maintaining water supply to Range E during construction activities.

### Scope of Works

- Clear and grub proposed pipeline route
- Supply and install 15Km DN 180 HDPE water main, air valves and scour points
- Liaise with Base stakeholders and Defence during commissioning and swap over of lines
- Decommissioning of 12Km existing Asbestos water main and 3Km of existing Blue Brut PVC water main
- Construct 120m of reinforced concrete sleeve through creek crossings at 2 locations to house water main service
- Construction of concrete aprons around valves
- Construction of pad foundations for cage arrangement at surface valve locations
- Supply and install of reinforced cages for surface valves
- Testing, chlorination and commissioning of new 15Km pipeline

### Achievements

- Liaise with local stakeholders to navigate through 6 cultural significant and high risk areas including 2 creek crossings
- Early identification of Design issues which resulted in 8Km of redesign to Pipeline 2. The redesign was completed by Shamrock Civil and provided for use



# RELEVANT EXPERIENCE



## WOOMERA RANGE ROADS RE-SHEETING AND MAINTENANCE, SA

### Location

Woomera, SA

### Client

Augility (DoD)

### Commencement Date

June 2022

### Completion Date

September 2023

### Contract Value

\$40M

### Overview

The Woomera roads re-sheeting project involved the design and construction of 84.7Km of sealed and unsealed road networks at Woomera Range E. Works aim to upgrade existing infrastructure at Woomera to facility Defence training.

### Scope of Works

- Design and Construct of 84.7Km of road network. Consisting of 13.7Km of 2 coat spray seal and 71Km of unsealed pavements
- Import of 150,000 Pm/20 material and moisture conditioning prior to placement
- 1,000T of Cut/fill
- Design and construction of Culvert crossings and Headwall installation. This included repair and upgrade of existing infrastructure
- Design and construction of 1Km sealed floodways finished with a 2-coat seal and upstream/downstream floodwalls
- Construction of water tank farms at 3 locations giving the project 200,000L of available water at each location
- Construction of a 48-man camp to house all project personnel for the duration of works
- Design and installation of road furniture for each road network
- Liaise with Defence and local stakeholders to achieve acceptable design and ensure timely delivery



### Achievements

- Import and moisture conditioning of 150,000T PM/20 material
- Works complete around Defence training activities and minimal disruption achieved.
- Works were carried out in a timely, Client satisfaction with overall outcome
- Sponsorship provided for events
- Engaged with family members of Defence personnel to assist with administration roles, camp management and office maintenance.



# RELEVANT EXPERIENCE



## LAND 4502 PAD WEST PFAS STOCKPILE AND ROAD WORKS

### Location

Townsville, QLD

### Client

Lendlease Building Pty Ltd

### Commencement Date

April 2020

### Completion Date

February 2021

### Contract Value

\$1.6M

### Overview

Lendlease awarded WSU Civil the Land 4502 PFAS Management package at the RAAF Base, Townsville. Works involved the bulk excavation of 20000m3 of contaminated materials, treating as required, placing the material onto a pad and compacting.

### Scope of Works

- Environmental controls - as the work was in wetlands the initial environmental controls were essential
- Daily traffic control
- Service roads - 3946.54t Type 2.1 and 4650.38t Type 2.3
- Bulk earthworks - 20000m3 of contaminated material
- Surface drainage
- Decontamination

### Achievements

WSU Civil maintained a good relationship with Lendlease through weekly project meetings. The project was completed on time and on budget. Over 70% of the workforce were either Aboriginal or Torres Strait Islander. We were able to deliver a flexible program to accommodate stakeholder requirements.



# RELEVANT EXPERIENCE



## WOOMERA RANGE LAUNCHER PAD REMEDIATION

### Location

Woomera, SA

### Client

Department of Defence (Augility)

### Commencement Date

March 2021

### Completion Date

July 2021

### Contract Value

\$1.6M

### Overview

This project involved remediation of reinforced concrete pads at Launch Area 1 and Launch Area 2, Woomera Range, South Australia.

The Woomera Range Complex is located in North Western South Australia and encompasses the RAAF Base Woomera and Woomera Test Range. The Woomera Test Range (WTR) encompasses the Woomera Prohibited Area (WPA) (RAAF Base Woomera excepted) and the Woomera Restricted Airspace (WRX). The WPA covers an area of 122,000 square km and primarily consists of State Government pastoral leases, Aboriginal lands and a conservation park.

### Scope of Works

- Demolish and remove the existing concrete slabs LA1 and LA2
- Demolition and removal of redundant stair wells and ventilation shafts
- Placement of a new quarry rubble base course beneath the proposed concrete slab
- Construction of new concrete slabs LA1 and LA2
- Relocating existing conduits and cables below ground

### Achievements

Project completed on time and on budget.

Local resources and contractors were subcontracted for this project.



# RELEVANT EXPERIENCE



## CULTANA TRAINING AREA 3 YEAR ROAD WORKS

### Location

Whyalla SA

### Client

Department of Defence (Aurecon)

### Commencement Date

February 2021

### Completion Date

July 2022

### Contract Value

\$11.2M



### Overview

The primary scope of work for the Cultana Training Area Roadworks project is road (11.5km) and drainage/culvert construction to ensure a fit for purpose structure. The site is situated in the Australian Army Cultana Training Area adjacent to Lincoln Highway and Port Bonython Road, Whyalla SA.

### Scope of Works

- UXO and cultural heritage site inspection
- Clearing and grubbing, stripping of seedbank (top 30mm) and stripping of topsoil
- Surface preparation for acceptance of general fill
- WSU Civil quarried general fill on-site and placed to design specifications under own supervision
- Import & place pavement materials 150mm subbase & 150mm wearing course
- Construct 20 RCBC culvert crossings with custom headwalls, apron slabs and rock protection
- Construct swale drain parallel to new road approx. 1.65km with rock protection at outlets
- Street furniture, fencing etc

### Achievements

- WSU Civil delivered this project achieving 'zero harm' relating to health, safety and environment. The completion of this project exceeded the contract schedule requirements in a timely manner without negatively impacting on the operation of the Defence facilities or neighboring properties or affecting Defence capabilities.
- WSU Civil engaged local contractors and resources from the Eyre Peninsula, which met our minimum 50% local participation target.



# RELEVANT EXPERIENCE



## SCHERGER FENCING, CREEK WORKS & UNSEALED ROAD

### Location

Weipa QLD

### Client

Barpa Pty Ltd

### Commencement Date

September 2019

### Completion Date

November 2019

### Contract Value

\$1.8M

### Overview

Barpa awarded WSU Civil the civil works package involving the replacement of perimeter boundary fencing and construction of floodway infrastructure at RAAF Base Scherger located near Weipa in QLD. Barpa is a majority indigenous-owned joint venture between the Federation of Victorian Traditional Owner Corporations and Icon.

The Scherger fencing and creek works project required all weather access to the entirety of the perimeter fencing for Defence. Construction of custom fencing over the floodways allowed the water to cross over during the wet season and for the fence panels to fold down to minimise damage. The fencing can then be re-erected when the water subsides.

### Scope of Works

- Site clearing and grubbing to perimeter access track
- Construction of 1km of perimeter road pavements
- Construction of 3 concrete floodways/ causeways
- Supply and installation of prefabricated security grates over the pipe openings
- Construction of concrete pavements over floodway crossings
- Manufacture and installation of custom fencing over flood ways and tie ins to the existing perimeter fencing
- Installation of rock scour protection and gabion baskets

### Achievements

WSU Civil engaged with local supply nation registered subcontractors to assist in the delivery of the project along with engaging local workers from the traditional land owner group. We achieved a 54% indigenous participation rate for the project.







# ASMTI FACILITIES PROJECT SHOALWATER BAY TRAINING AREA CIVIL WORKS - STAGE 14 UOLF WESTERN CIVILS & STAGE 3 ACCESS ROADS

## Location

Ogmore, Shoalwater Bay QLD

## Client

Laing O'Rourke Aust Const P/L

## Commencement Date

February 2021

## Completion Date

November 2021

## Contract Value

\$11.4M



## Overview

WSU Civil were contracted by Laing O'Rourke to undertake the civil works on the ASMTI SWBTA Stage 3 Access Road and Stage 14 Urban Operation Live Firing (UOLF) Training Area.

The scope undertaken on Stage 3 included, site clearing, bulk earthworks and pavements including quarrying, stormwater drainage, landscaping concrete floodways and road furniture.

Stage 14 UOLF area included bulk earthworks, pavements, subsoil drainage, open channel drains, stormwater, communication & electrical infrastructure, bio retention basins, building pads and chip seal car park.

## Scope of Works

- Bulk earthworks activities:
  - Cut to Stockpile (Topsoil for reuse) = 13,079m<sup>3</sup>
  - Cut to Fill = 7,215m<sup>3</sup>
  - Bulk fill generated from material from onsite quarry = 32,384m<sup>3</sup>
- 3 x Stormwater Culvert Crossings including 9/1200x600 RCBC, 2/900x600 RCBC and 1/600x600 RCBC
- 868m of Subsoil Drain
- 194m of 300mm dia stormwater pipe
- 4.5km (20,821m<sup>3</sup>) of Unsealed Pavement consisting of 2 pavement layers imported from the onsite quarry managed by WSU Civil.
- Unsealed pavement ring roads to the Urban Operation and Live Fire training facility (4,544m<sup>3</sup>)
- Chip Seal Carpark 1,481m<sup>2</sup>

## Achievements

WSU Civil successfully managed the bio-security risk of the local area and site through the implementation of a series of controls including daily weed inspections to identify any potential risks, removal of any weeds identified during the inspection along with ensuring all plant and equipment entering and existing the project were suitably cleaned and declared as weed & seed free.

WSU Civil worked closely with Laing O'Rourke and WSU Civil's quarry subcontractor to produce a road base pavement material that satisfied the stringent specification and meet the design intent.



# RELEVANT EXPERIENCE



## LAND 155 WP2 LAVARACK BARRACKS - CIVIL WORKS

### Location

Townsville QLD

### Client

NACPP

### Commencement Date

October 2017

### Completion Date

February 2018

### Contract Value

\$1.2M

### Overview

The LAND 155 WP2 project involved the construction of new shelters and hardstand at Holsworthy Barracks, Camp Sapper Liverpool in NSW, Wallangarra Barracks in SEQ and Lavarack Barracks in North QLD. National Aboriginal Construction Partners Projects (NACPP) awarded WSU Civil the civil works package at Lavarack Barracks in Townsville. NACPP is a majority indigenous-owned joint venture made up of two entities, National Aboriginal Construction Partners and BADGE Constructions (Qld) Pty Ltd.

### Scope of Works

- Earthworks including import fill and subgrade trim
- Placement of heavily bound subbase with 7mm seal
- Compaction of gravel unbound pavements
- Excavation and pouring of structural footings and slab under building
- New stormwater services connecting into the existing stormwater network including pipes, inlets, pits and kerb
- Construction of 2m concrete dish drain including subsoil drains, unbound pavements and concrete slab
- Extension of the existing security fencing to provide a secure compound including 3m high chainwire fence, gates and guardrail



### Achievements

WSU Civil were commended on their successful delivery of the large scale shed slab. This project was delivered with no environmental impacts, on time and within budget.





## CONTACT INFORMATION

### BRISBANE

- ☎ 07 3727 1100
- 📍 195 Cobalt Street  
Carole Park  
QLD 4300

### DARWIN

- 📍 Building 3, Level 2  
Darwin Corporate Park  
631 Stuart Highway  
Berrimah NT 0828

### TOWNSVILLE

- ☎ 07 4417 1600
- 📍 646 Ingham Road  
Mount Louisa  
QLD 4814

### ADELAIDE

- ☎ 08 8244 2335
- 📍 163 Francis Road,  
Wingfield  
SA 5013

### MELBOURNE

- ☎ 03 9543 4511
- 📍 Suite 4 Building 25, 270 Ferntree Gully Road  
Notting Hill  
VIC 3168

### ROCKHAMPTON

- ☎ 07 4922 7012
- 📍 Ground Floor Suite 2, 130 Victoria Parade  
Rockhampton  
QLD 4700